

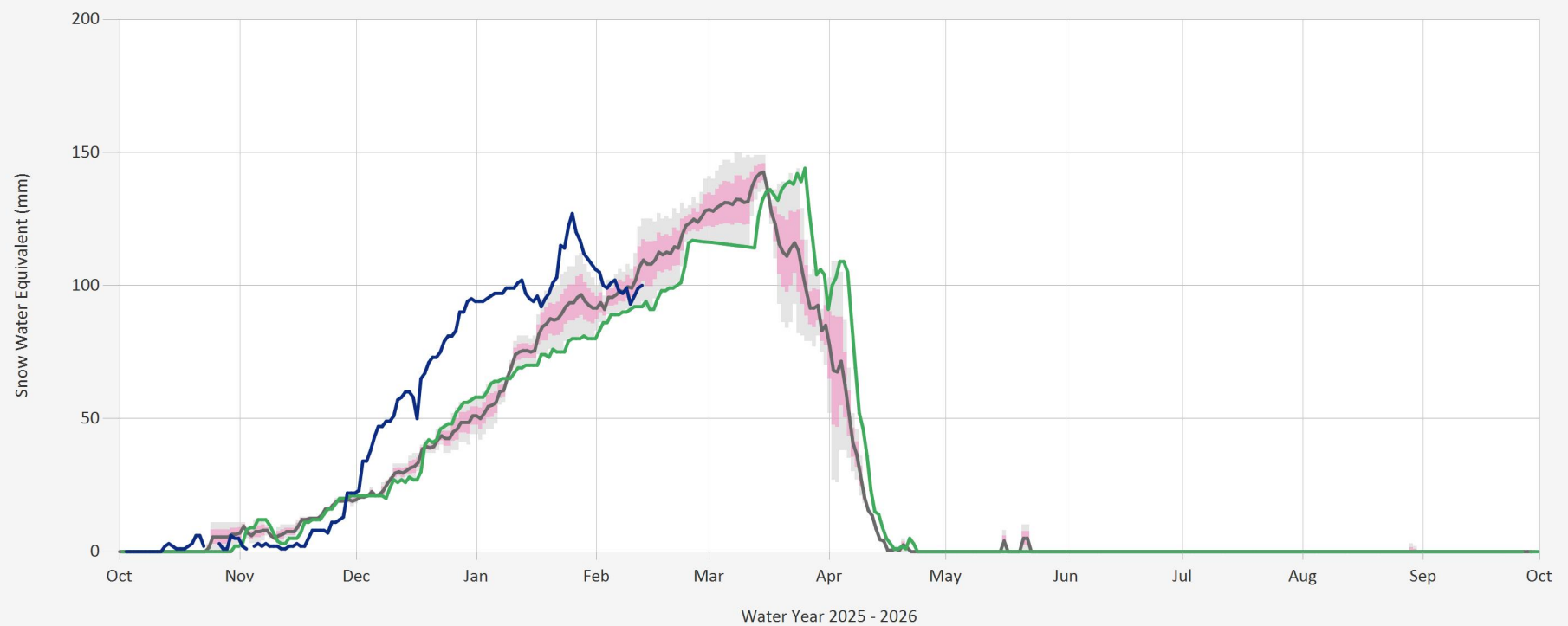
Automated Snow Weather Station Graph

Feb 15, 2026 | 1 of 1

Snow.1C44P.Automated Snow Weather Station Graph

Source Data: SW.Daily@1C44P

Location: Paradise Lake, Latitude: 49.948639, Longitude: -120.282278, Elevation: : 1640 m



Statistics are based on the period of record prior to the current Water Year

Data last appended: February 12, 2026 16:00 UTC+00:00

Statistics are only displayed for locations with at least two years of data

Automated Snow Weather Station Graph is only available for Active locations

Status: Active